



Professional Laundry Equipment

Drying Cabinet ProLine TS 63 E and ProLine TS 93 E



There are many ways to dry wet textiles.
There is only one solution that can dry them all.

The drying cabinet was designed by PODAB's engineering team to innovate the drying process by introducing fast drying of large quantities without mechanical action.

Quality

Experienced technicians bring you the most innovative drying cabinets on the market today.

Sustainability

Designed to provide an environmentally conscious laundry solution with energy-efficient drying, lowering your energy consumption.

Clean and Safe Solutions

Built to greatly limit the airborne lint to reduce allergens.

Designed to Last

Our premium drying cabinets guarantee quality, durability, and an extended life expectancy with its consciously chosen materials and quality build.

ProLine

TS 63 E

TS 93 E

“ *At PODAB, we believe in creating innovative solutions that improve people’s lives. Our drying cabinets were created out of a desire to provide an energy-efficient and gentle way to dry garments and textiles, while also reducing the environmental impact. We are committed to delivering high-quality products that simplify our customers’ lives and help them take care of their belongings in a more sustainable way.*

”

Robert Sellberg - CEO of PODAB, Inc. and COB of the PODAB Group

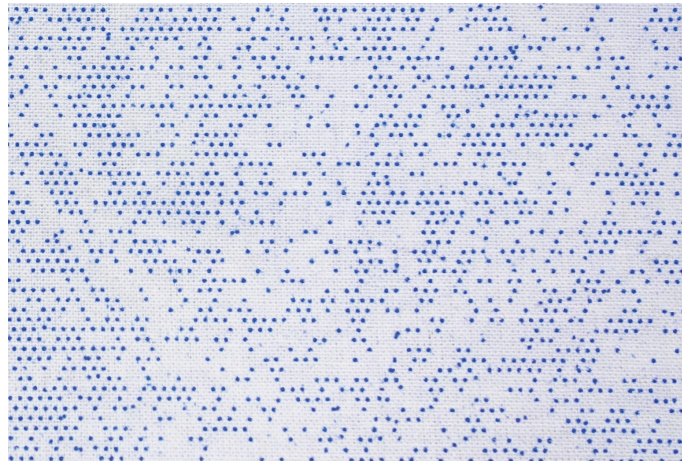
Uncompromising Quality

Drying without Mechanical Action

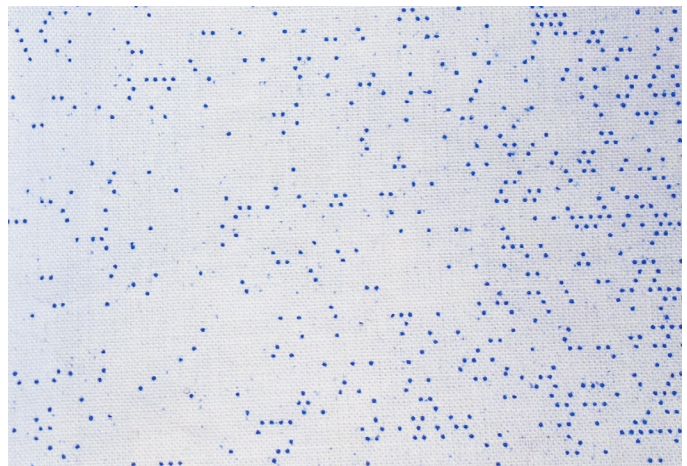
ProLine TS 63 E and TS 93 E dry without mechanical action which allows for gentle drying without friction. This increases the lifespan of the textiles while also reducing the energy consumption.

The Proline TS 63 E and TS 93 E are designed to dry textiles using heat and air, by relying on the principles of circulation and evaporation. This makes the cabinet a gentler option for textiles, as there is no risk for the textiles to get snagged or damaged in the drying process. By using heat and air circulation, it provides a more controlled and consistent drying environment.

We have compared wear caused by washing and drying without mechanical action with wear caused by washing and drying with mechanical action for our own machines. Our test shows that the textiles that were dried with mechanical action had a 64% more wear and tear compared to the textiles that were dried without mechanical action.



Textile washed and dried **without** mechanical action.



Textile washed and dried **with** mechanical action.





Environmentally Cautious

We are proud to share that our manufacturing plants are quality ISO 9001 and environmentally ISO 14001 certified.

Sustainability

Our products are designed to provide an environmentally conscious laundry solution with high energy efficiency, leaving the smallest carbon footprint possible. Our premium products guarantee quality, durability, and an extended life expectancy. PODAB's innovative technology and programs calculate the moisture, time and temperature required for textiles and accessories to not only come out perfectly dry, but also be more environmentally responsible.

Energy-Efficient

Our modern laundry equipment can significantly reduce energy consumption. PODAB's ProLine drying cabinets have been developed with an extra focus on an ecologically responsible solution with lower impact on the environment.

The ProLine drying cabinets use a different method of drying textiles and accessories than traditional dryers. While traditional dryers use heated air to evaporate moisture from the textiles and expel it outside, the ProLine drying cabinets use a combination of gentle heat and air circulation to carefully evaporate the moisture from the textiles and accessories.

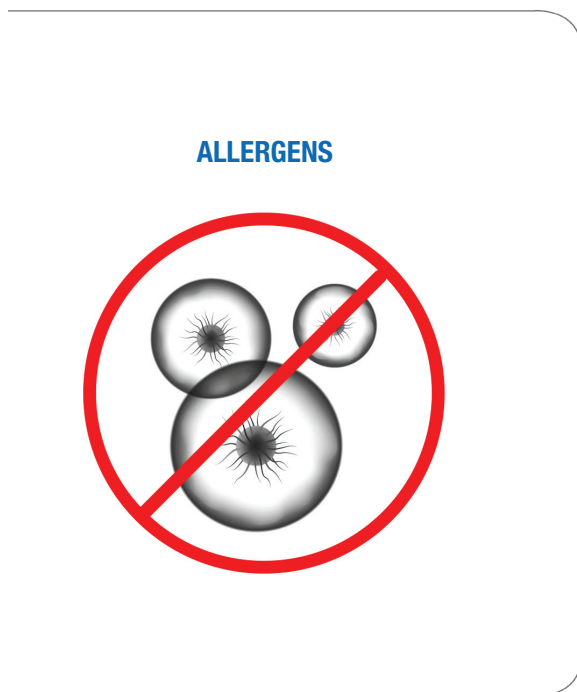
Because the ProLine drying cabinets do not use a lot of heat, they consume less energy than traditional dryers. Additionally, the drying cabinets use a much smaller volume of air to dry textiles and accessories, which means they use less energy to circulate air through the clothes. The ProLine drying cabinets are designed to be very efficient at retaining heat, which means that the heat they do generate is used more effectively to dry.

These factors combined make the ProLine drying cabinets a more energy-efficient option for drying protective equipment with lower energy costs.



Clean and Safe Solutions

Commercial and professional machines need a higher standard for larger volumes to properly dry. These machines also need to meet one of the highest requirements: hygiene regulations.



Hypoallergenic Drying

The PODAB drying cabinets dry with an electrically heated recirculated fan system which limits the lint release and airborne lint, therefore reduces the presence of allergens in the drying process. Making it the perfect product to dry textiles and clothing for people who are prone to allergies or are sensitive to common allergens.

Designed to last

Durability

The drying cabinets ProLine TS63 E and ProLine TS 93 E are built for tackling heavy loads of textiles. With their large capacity and durable construction, they have the stability required to handle high loads for an extended period. ProLine TS 63 E and ProLine TS 93 E have been rigorously tested to ensure a 20+ year life expectancy with continuous use and very little upkeep needed.

Maintenance Free

The PODAB drying cabinets require very little maintenance which notably reduces the overall costs. Since the drying cabinets run without mechanical action, there is no lint filter needed. Lint is usually the main reason for maintenance upkeep. Due to the non-existing mechanical action, the drying cabinets run solely on electrically heated air which significantly reduces your energy consumption and costs.

Easy-to-Use

ProLine TS 63 E and ProLine TS 93 E are designed with ergonomics in mind. They feature a clean display panel and provide easy to navigate preset programs with buttons and braille. The large doors make loading and unloading easy, opening with very little manual effort. With various preset automatic drying programs available, ProLine TS 63 E and ProLine TS 93 E offer both fast and gentle options to suit nearly all drying needs.

Demanding Environments

The laundry space in more demanding environments can be both pleasant and functional. Drying cabinets TS 63 E and TS 93 E have solid constructions and are developed to endure long-term use and strain. They are reliable and robust machines that are spacious and efficient. Made to withstand long-term loads.

Coated Galvanized Steel

The drying cabinets are made of high-quality coated galvanized steel. This production is more energy efficient, using natural resources to ensure a lower impact on the environment. The benefits are great; they are extremely durable, recyclable, and also very hygienic.



 **PODAB**

Technical specifications and control panel area on the right side of the cabinet, including a digital display and various indicator lights.



HTS... Humidity Tracking System

Drying cabinets TS 63 E and TS 93 E are programmed with a state-of-the-art Humidity Tracking System (HTS) to automatically measure and adjust the temperature. HTS tracks the humidity level of the textiles and accessories all throughout each drying segment using built in sensors. The Humidity Tracking System automatically turns the drying program off when the items inside are perfectly dry.

ProLine TS 63 E



Saves energy

TS 63 E is equipped with HTS (Humidity Tracking System) which senses the moisture level and interrupts the drying process exactly when the laundry is dry. TS 63 E consumes only 3.0 kWh / drying cycle.

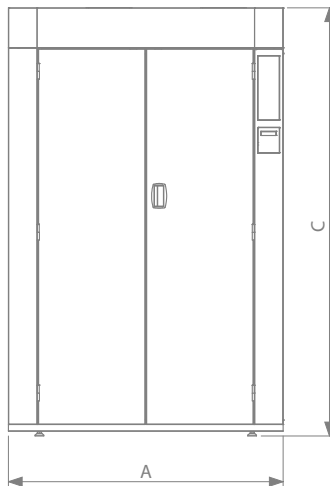
Standard features

- HTS - Humidity Tracking System with temperature and humidity sensors.
- High temperature programs, greatly reduces bacterial contaminants and allergens.
- Microprocessor control with manual and automatic modes.
- Hanging rail rotates out 180° and doors open 190°.
- Double overheat protection with backup sensor for increased safety.
- Electric heated.
- Fast and efficient drying times.
- Interior lighting.
- Easy to navigate programs with display, buttons and braille.
- Four automatic drying programs and one timed program.
- Adjustable preset start time.
- Adjustable feet from the inside of the cabinet.
- Powder coated galvanized steel.

Optional features

- Single hanging bar.
- Door hook racks attached on the inside of the door for additional accessories.

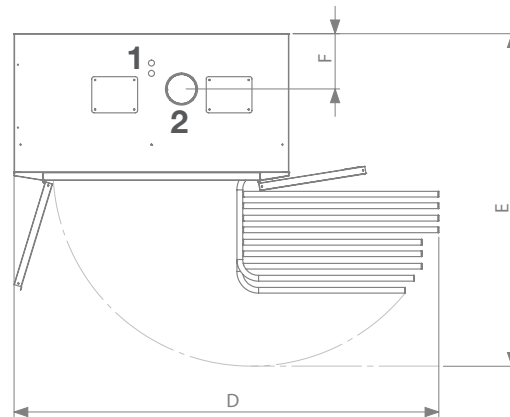
Front



Left Side



From Above



1. Electrical connection
2. Outlet exhaust

TS 63 E	A	B	C	D	E	F	Weight
in	47.2	25.1	73.6	73	57.2	9.5	320 lbs
mm	1200	638	1870	1855	1453	242	145 kg

Machine Type		Drying Cabinet
Product Name		ProLine TS 63 E
Product No. 3P electric connection		234001
Product No. 1P electric connection		234002
Warranty		3 years limited
Main Data		
Type		Air vented
Hanging length	ft / m	52.5 / 16
Capacity (dry weight)	lbs / kg	22 / 10
Interior capacity	cu ft / L	34.7 / 983
Drying capacity	oz/min / g/min	2.2 / 62
Energy consumption	kWh	3.0
Languages		8
Noise emission	dB(A)	62
Prepared for payment system		Standard
Reversible hanging rack		Standard
Electrical Installation 3P		
Supply voltage	V	208-240 V, 3P, 60Hz
Electric heating	kW	6.0
Electric fan	kW	0.3
Total effect	kW	6.3
Protection	A	30
Electrical Installation 1P		
Supply voltage	V	208-240 V, 1P, 60Hz
Electric heating	kW	4.5
Electric fan	kW	0.3
Total effect	kW	4.8
Protection	A	30
Dimensions		
Outer: width x depth x height	in / mm	47 x 25.2 x 74 / 1200 x 640 x 1870
Shipping dimensions: width x depth x height	in / mm	49 x 28 x 81 / 1250 x 700 x 2050
Weight		
Weight	lbs / kg	320 / 145
Shipping weight	lbs / kg	351 / 159
Ventilation		
Outlet exhaust	Ø in / mm	6 / 152
Outlet air flow	cfm / m³/h	135 / 230
Pressure drop, max	psf / Pa	1.46 / 70
Maximum air flow (at 0% pressure)	cfm / m³/h	200 / 340
Optional Accessories		
Single bar	Product No.	131070
Hooks for drying cabinet door: 3 separate rows with 4 hooks on each, 1 set = 1 door	Product No.	131071

We are proud to share that our manufacturing plants are quality ISO 9001 and environmentally ISO 14001 certified.

ProLine TS 93 E



Saves energy

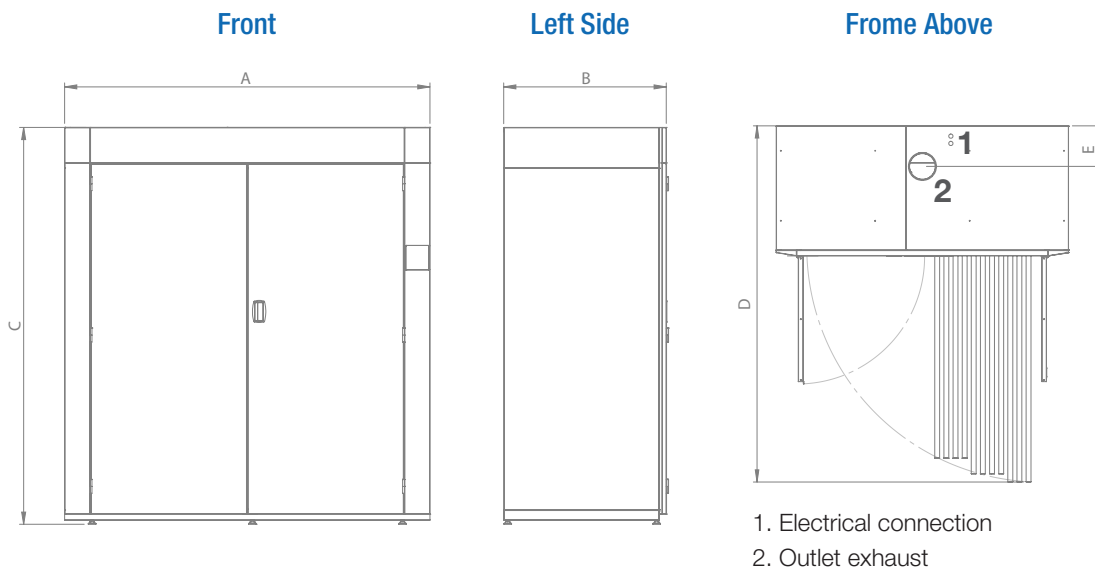
TS 93 E is equipped with HTS (Humidity Tracking System) which senses the moisture level and interrupts the drying process exactly when the laundry is dry. TS 93 E consumes only 6.4 kWh / drying cycle.

Standard features

- HTS - Humidity Tracking System with temperature and humidity sensors.
- High temperature programs, greatly reduces bacterial contaminants and allergens.
- Microprocessor control with manual and automatic modes.
- Hanging rail rotates out 90° and doors open 190°.
- Double overheat protection with backup sensor for increased safety.
- Electrically heated.
- Fast and efficient drying times.
- Interior lighting.
- Easy to navigate programs with display, buttons and braille.
- Four automatic drying programs and one manual timed program.
- Adjustable preset start time.
- Adjustable feet from the inside of the cabinet.
- Powder coated galvanized steel.
- Low energy consumption

Optional features

- Single hanging bar.
- Door hook racks attached on the inside of the door for additional accessories.

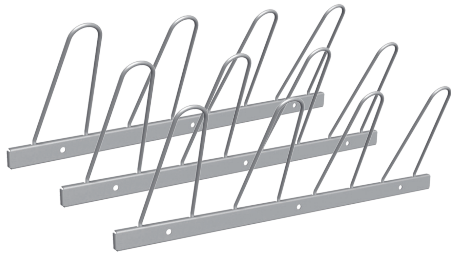


TS 93 E	A	B	C	D	E	Weight
in	71	31.5	77	204	9.84	518 lbs
mm	1800	800	1955	2192	250	235 kg

Machine Type		Drying Cabinet
Product Name		ProLine TS 93 E
Product No. 3P electric connection		233001
Product No. 1P electric connection		233002
Warranty		3 years limited
Main Data		
Type		Air vented
Hanging length	ft / m	105 / 32
Capacity (dry weight)	lbs / kg	40 / 18
Interior capacity	cu ft / L	73,1 / 2070
Drying capacity	oz/min / g/min	2.9 / 81
Energy consumption	kWh	6.4
Languages		8
Noise emission	dB(A)	65
Prepared for payment system		Standard
Reversible hanging rack		Not available
Electrical Installation 3P		
Supply voltage	V	208-240 V, 3P, 60Hz
Electric heating	kW	9.0
Electric fan	kW	0.45
Total effect	kW	9.45
Protection	A	40
Electrical Installation 1P		
Supply voltage	V	208-240 V, 1P, 60Hz
Electric heating	kW	7.2
Electric fan	kW	0.45
Total effect	kW	7.65
Protection	A	50
Dimensions		
Outer: width x depth x height	in / mm	71 x 31.5 x 77 / 1800 x 800 x 1955
Shipping dimensions: width x depth x height	in / mm	75 x 31 x 42 / 1915 x 790 x 1060
Weight		
Weight	lbs / kg	518 / 235
Shipping weight	lbs / kg	606 / 275
Ventilation		
Outlet exhaust	Ø in / mm	6 / 152
Outlet air flow	cfm / m³/h	210 / 350
Pressure drop, max	psf / Pa	5.43 / 260
Maximum air flow (at 0% pressure)	cfm / m³/h	353 / 600
Optional Accessories		
Single bar	Product No.	131072
Hooks for drying cabinet door: 3 separate rows with 4 hooks on each, 1 set = 1 door	Product No.	131071

We are proud to share that our manufacturing plants are quality ISO 9001 and environmentally ISO 14001 certified.

Product Accessories



Hooks for drying cabinet

Product number: 131071

Mounted on the inside of one door for small garments. Fits drying cabinets in the ProLine series. 3 separate rows with 4 hooks on each.



Clothing rack for drying cabinets

Product number: 131070 (TS63E) & 131072 (TS93E)
Provides the single bar option to dry clothes on hangers. Full length rack attached on each side of the cabinet. Fits drying cabinets TS 63 E and TS 93 E from the Pro-Line series.

Laundry Room Accessories



Wall mounted ironing board SB 13

Product number: 161011

Mounted against a wall and can be folded in when not in use. Adjustable height.

LxW in / mm: 48 x 18 / 1214 x 435



Laundry Cart TP4

Product number: 161033

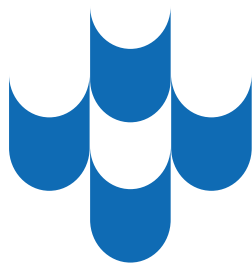
Laundry cart with four castors for best mobility and deflector covers that minimize the risk of scratches.

Height basket front in / mm: 21 / 535

WxDxH in / mm: 34 x 20 x 28 / 610 x 520 x 872

Capacity Bushel: 2.5





www.podab.us

PODAB Inc.

1330 Main Street, Floor 2. Sarasota, FL. 34236, USA
Email. info@podab.us, Tel.+1 (800) 683-4873

Copyright © 2023 PODAB Inc, All rights reserved. 032023.